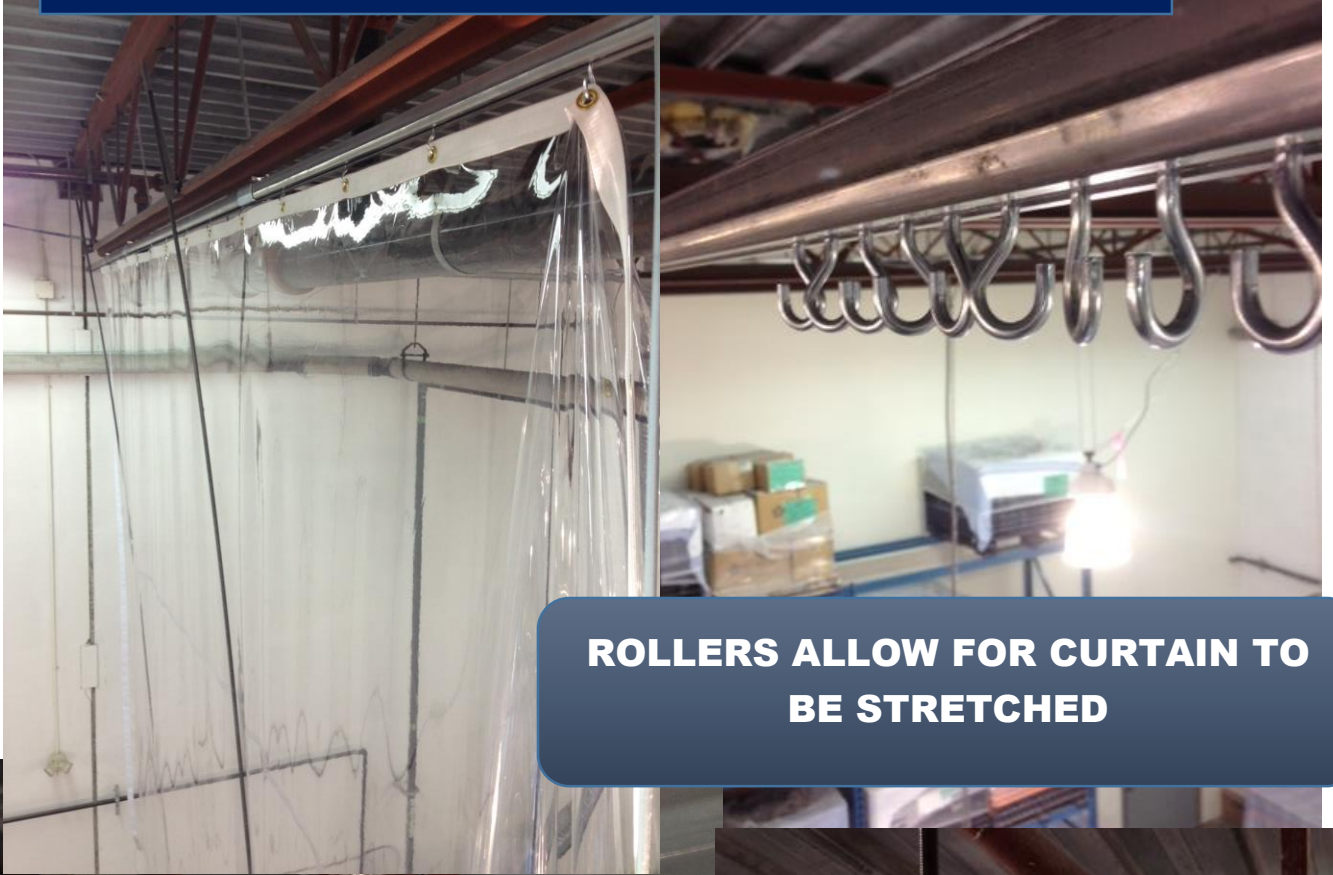


BEAM CLAMP TRACK SUSPENSION FROM TRUSSES

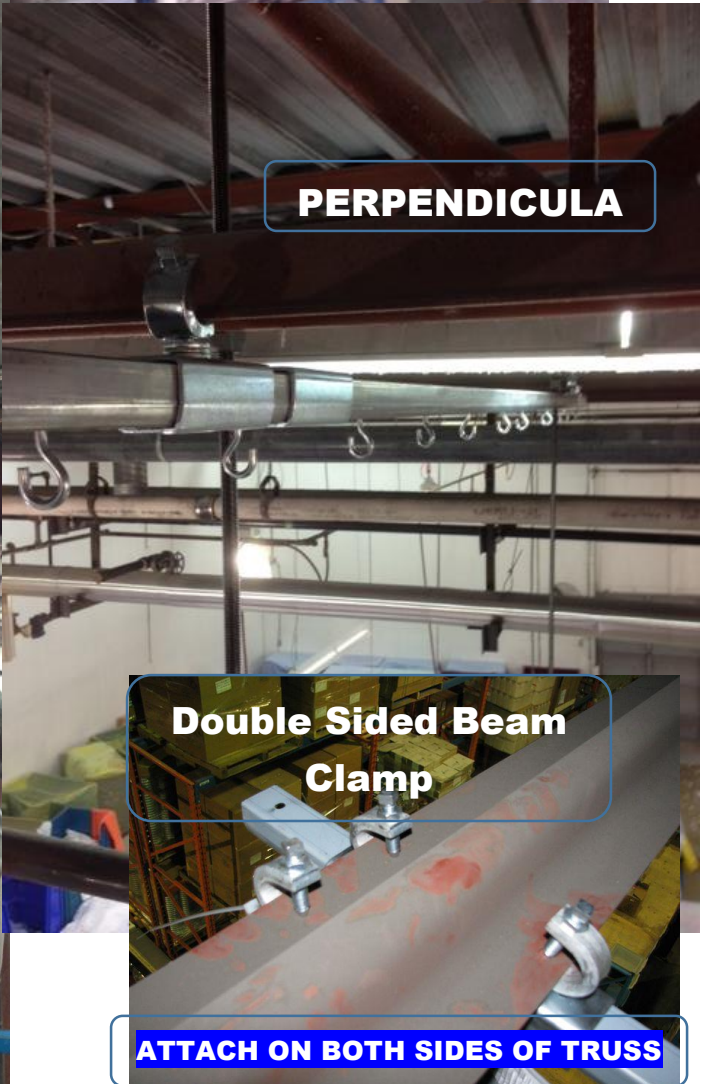
PARALLEL & PERPENDICULA SUSPENSION



ROLLERS ALLOW FOR CURTAIN TO BE STRETCHED



PARALELL



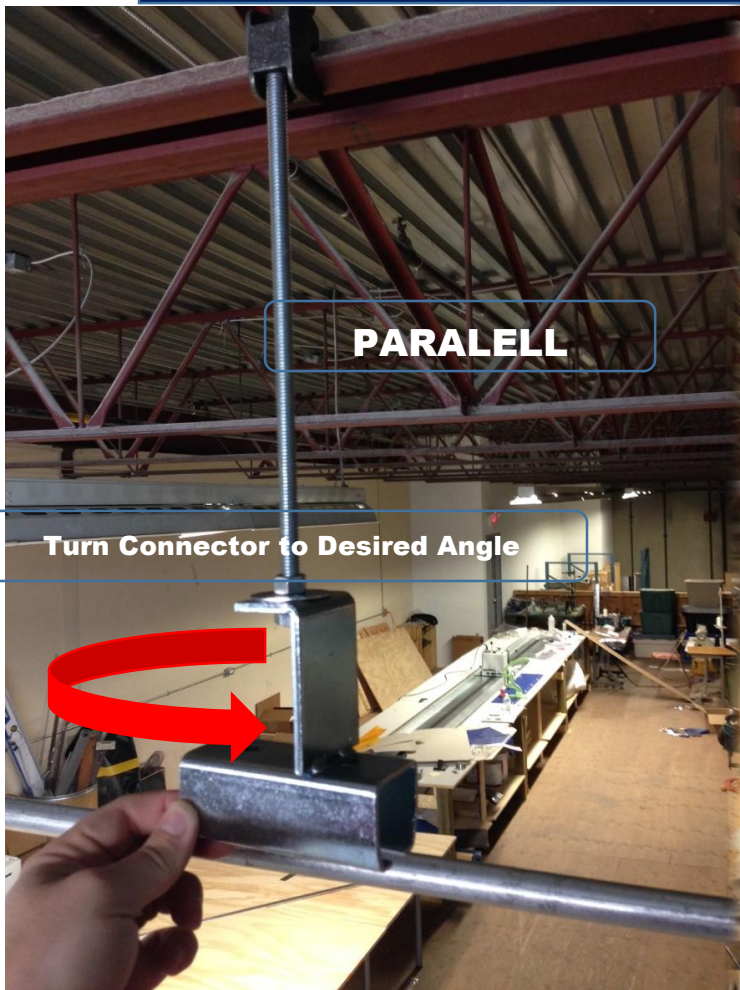
PERPENDICULA

Double Sided Beam Clamp

ATTACH ON BOTH SIDES OF TRUSS

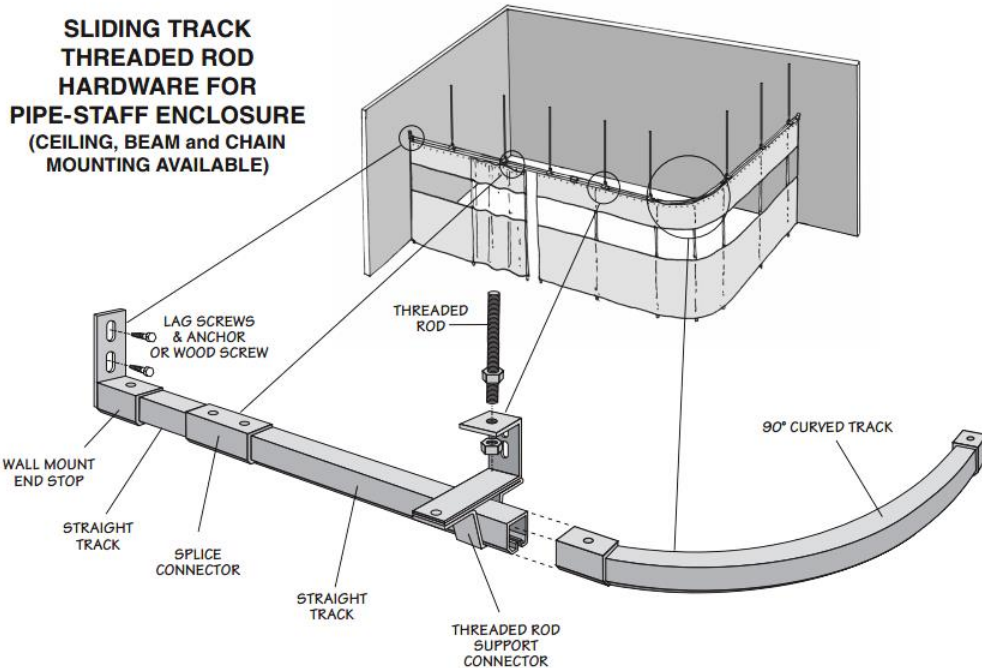
THREADED ROD SUSPENSION FROM TRUSSES & BEAMS

PARALLEL & PERPENDICULAR SUSPENSION



COMMON TWO SIDE CONFIGURATION

Hanging Rod Plate for Flat Ceilings



THREADED ROD SUSPENSION FROM TRUSSES & BEAMS

SUSPENDED STRIP CURTAIN FRAMES

